



UTENSIL WASHER LU-75B 230-400/50/3N DD(WITH DRAIN PUMP)

780 x 700 mm basket.

P/N 1300590



Basket dimensions: 780 mm x 700 mm
Stainless steel basket: 1
Equipment: supplementary trays: 1
Useful height: 650 mm
Cycles: 3
Cycle duration: 120" / 240" / 360"
Production baskets / hour: 30 / 15 / 10
Pressure pump power: 470 W

Electrical supply: / 50 Hz /
Electrical connection: 3P+N+G

Loading

- ✓ Pump: 3,2 Hp / 2400 W
- ✓ Tank: 6000 W
- ✓ Boiler: 10500 W
- ✓ Total loading: 12900 W

Temperature: 10°C - 60°C
Wash temperature: 40°C - 70°C
Rinse temperature: 70°C - 95°C
Wash tank capacity: 80 l
Boiler capacity: 12 l
Water consumption/cycle: 6 l
Drainage base maximum height: 185 mm
Drain diameter: 30 mm

External dimensions (W x D x H)

- ✓ Width: 922 mm
- ✓ Depth (closed): 932 mm
- ✓ Depth (open): 1312 mm
- ✓ Height (closed): 1840 mm
- ✓ Height (open): 2035 mm

Net weight: 196 kg
Noise level (1m.): 76 dB(A)

Crated dimensions

960 x 1060 x 1950 mm
Gross weight: 210 kg

SALES DESCRIPTION

Max. loading height: 650 mm.

Ideal to wash big sized pots and wares.

- ✓ Powerful and high pressure: specially indicated for restaurants, ice-cream shops, pastries and butcheries.
- ✓ Constructed from stainless steel.
- ✓ Door divided in two parts, perfectly counterbalanced, easy to handle.
- ✓ Double skinned machines: silent working and reduced thermal dispersions.
- ✓ Wash tank without corners to avoid dirt accumulation in angles.
- ✓ Stamped wash dispersers in stainless steel tubes.
- ✓ Easy to remove wash- and rinse dispersers.
- ✓ Safety micro switch at the door and electronic safety device to guarantee washing temperature and time.
- ✓ Electronic control panel with LED showing wash and rinse temperature.

INCLUDES

- ✓ 1 stainless steel basket and insert for 4 trays.
- ✓ Adjustable detergent dosing equipment.
- ✓ Version with drain pump and non-return valve.
- ✓ Rinse aid dosing equipment.

OPTIONAL

- ☐ Stainless basket.
- ☐ Stainless carrier for trays.

ACCESSORIES

- ☐ Stainless steel baskets
- ☐ Dosing equipments
- ☐ Manual water softeners
- ☐ Carrier for trays
- ☐ Automatic water softeners

SPECIFICATIONS



SAMMIC S.L.
Basarte, 1 - 20720 AZKOITIA
www.sammic.com



WARE WASHING
POT WASHERS

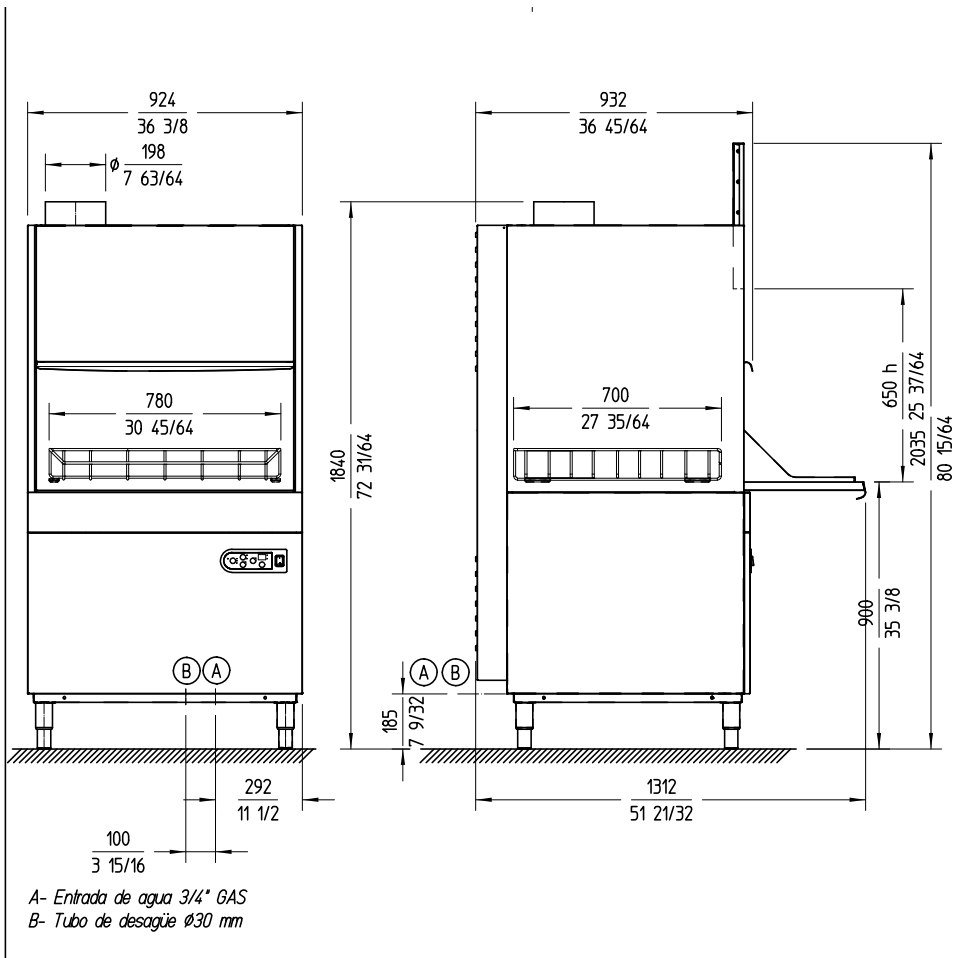
product sheet
updated 19/01/2024



UTENSIL WASHER LU-75B 230-400/50/3N DD(WITH DRAIN PUMP)
780 x 700 mm basket.

P/N 1300590

WARE WASHING
POT WASHERS



sammic | www.sammic.com
Food Service Equipment Manufacturer

Polígono Basarte, 1.
20720 Azkoitia, Spain

phone +34 943 15 72 36
sales@sammic.com



Project	Date
Item	Qty
Approved	

product sheet
updated 19/01/2024